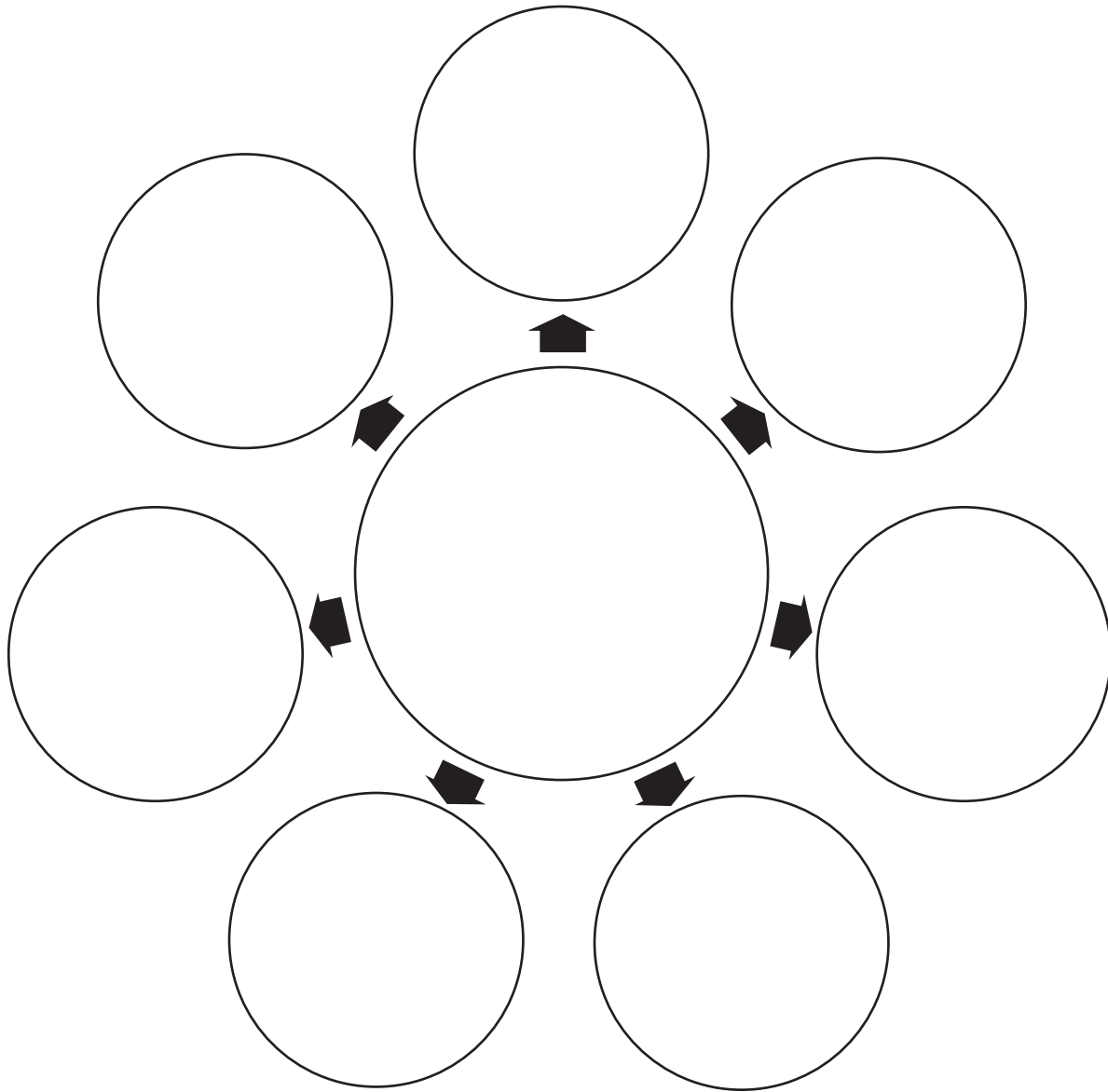
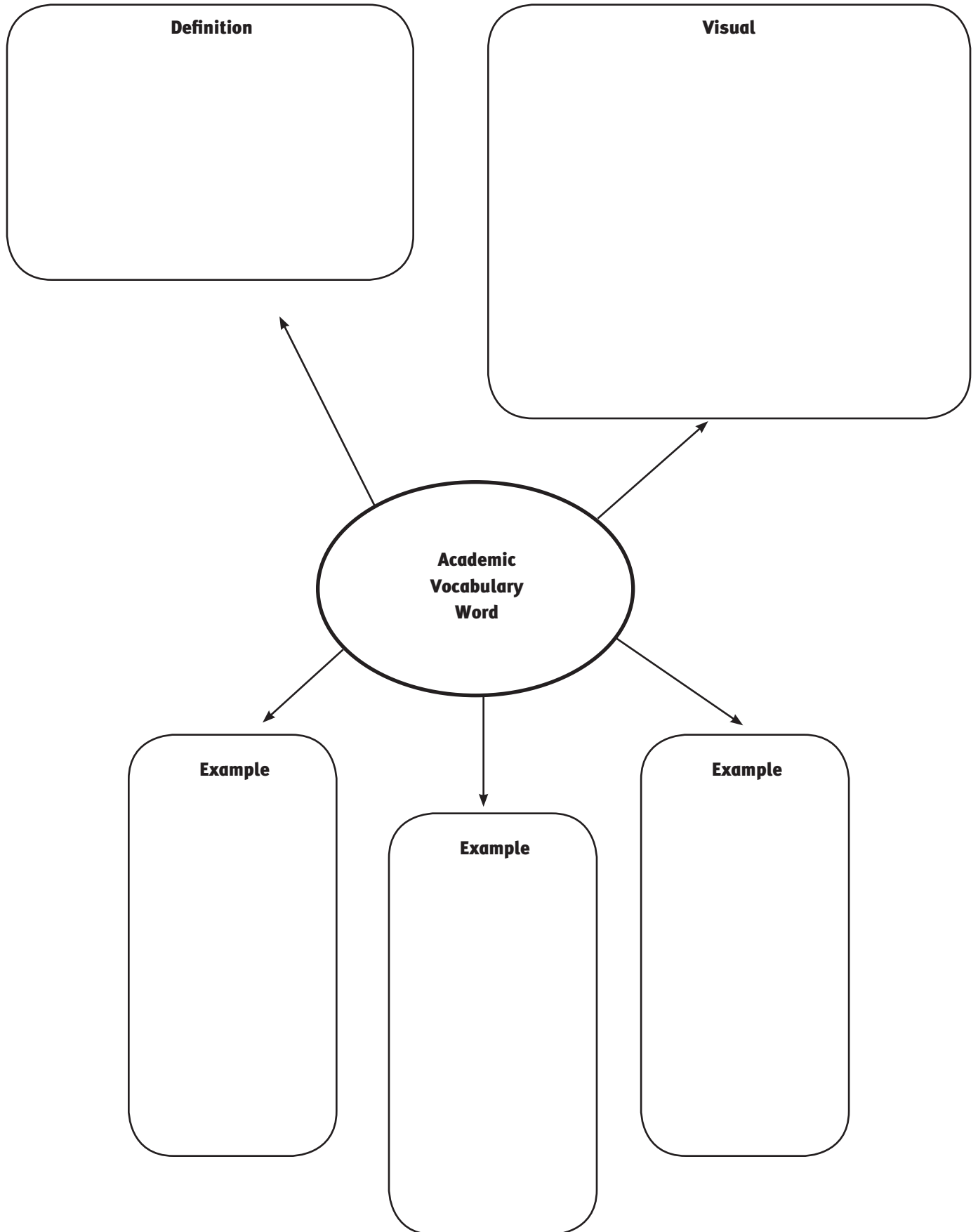


# Web Organizer



# Word Map



# Verbal & Visual Word Association

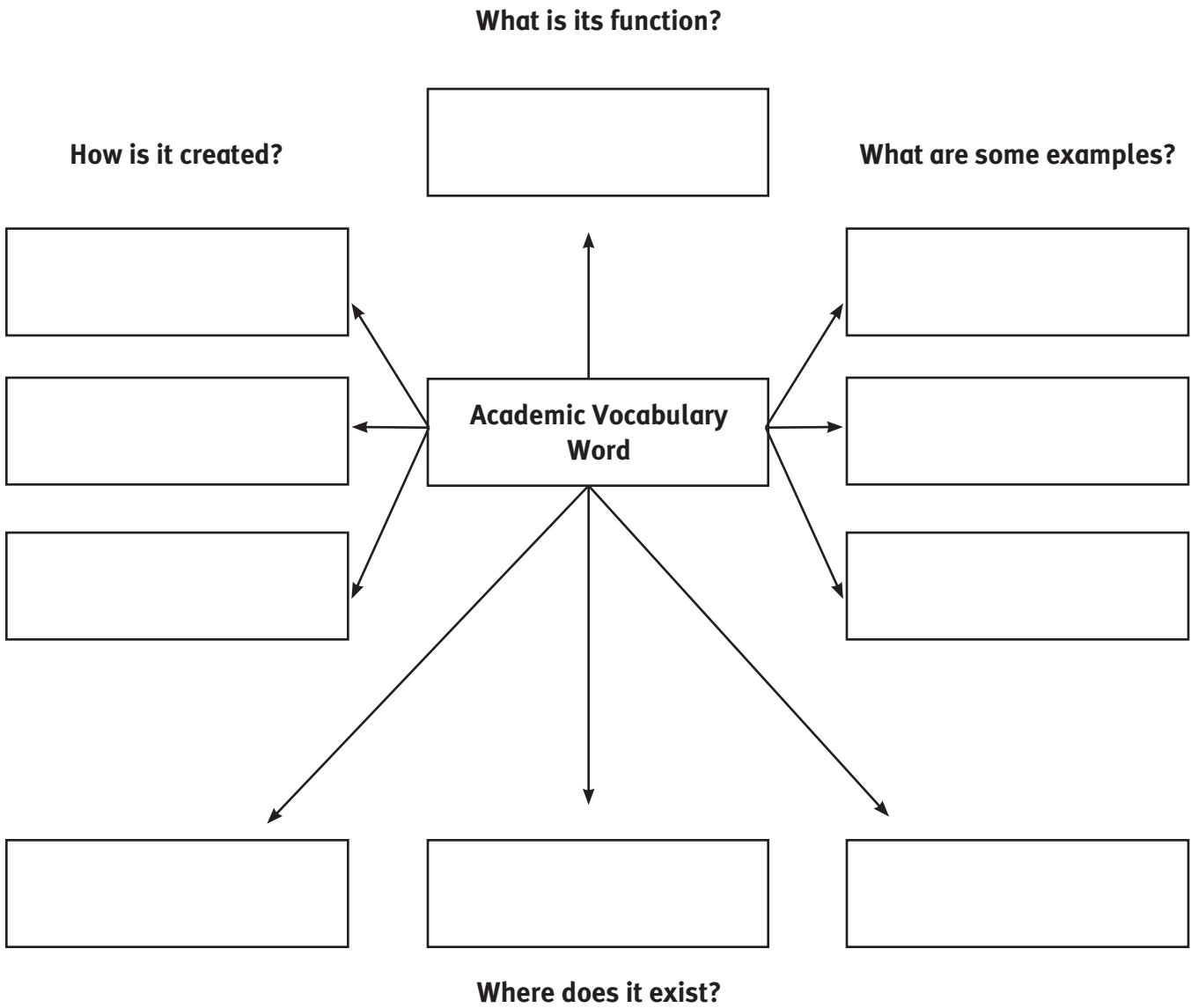
<b>Definition in Your Own Words</b>	<b>Important Elements</b>
<b>Visual Representation</b>	<b>Personal Association</b>

**Academic  
Vocabulary  
Word**

## Definition and Reflection

<b>Academic Vocabulary Word</b>	
Definition in own words	
Graphic Representation (literal or symbolic)	
<p><b>My experiences with this concept:</b></p> <ul style="list-style-type: none"><li>• I haven't really thought about this concept. _____</li><li>• I have only thought about this concept in Language Arts class. _____</li><li>• I have applied this concept in other classes. _____</li><li>• I have applied this concept outside of school. _____</li></ul>	<p><b>My level of understanding:</b></p> <ul style="list-style-type: none"><li>• I am still trying to understand this concept. _____</li><li>• I am familiar with this concept, but I am not comfortable applying it. _____</li><li>• I am very comfortable with this concept and I know how to apply it. _____</li><li>• I could teach this concept to another classmate. _____</li></ul>

# Concept Definition Map



# SOAPSTone:

<b>SOAPSTone</b>	<b>Analysis</b>	<b>Textual Support</b>
<b>Speaker:</b> What does the reader know about the writer?		
<b>Occasion:</b> What are the circumstances surrounding this text?		
<b>Audience:</b> Who is the target audience?		
<b>Purpose:</b> Why did the author write this text?		
<b>Subject:</b> What is the topic?		
<b>Tone:</b> What is the author's tone, or attitude?		

# TP-CASTT Analysis

**Poem Title:**

**Author:**

**T**itle: Make a prediction. What do you think the title means before you read the poem?

**P**araphrase: Translate the poem in your own words. What is the poem about? Rephrase difficult sections word for word.

**C**onnotation: Look beyond the literal meaning of key words and images to their associations.

**A**ttitude: What is the speaker's attitude? What is the author's attitude? How does the author feel about the speaker, about other characters, about the subject?

**S**hifts: Where do the shifts in tone, setting, voice, etc., occur? Look for time and place, keywords, punctuation, stanza divisions, changes in length or rhyme, and sentence structure. What is the purpose of each shift? How do they contribute to effect and meaning?

**T**itle: Reexamine the title. What do you think it means now in the context of the poem?

**T**heme: Think of the literal and metaphorical layers of the poem. Then determine the overall theme. The theme must be written in a complete sentence.